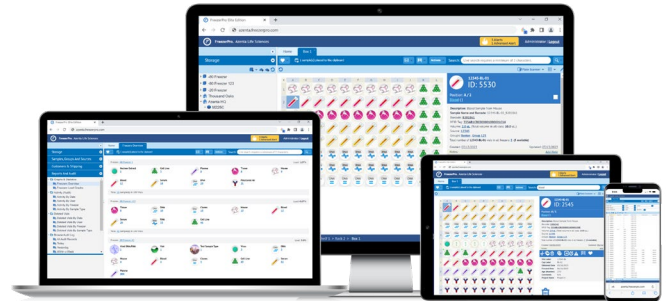


FreezerPro Sample Management System



The FreezerPro® system is a scalable web-based sample inventory management system ideal for users managing hundreds of collections in all types of organizations ranging from lower throughput labs to central biorepositories with millions of records; delivers secure management of samples and sample information.

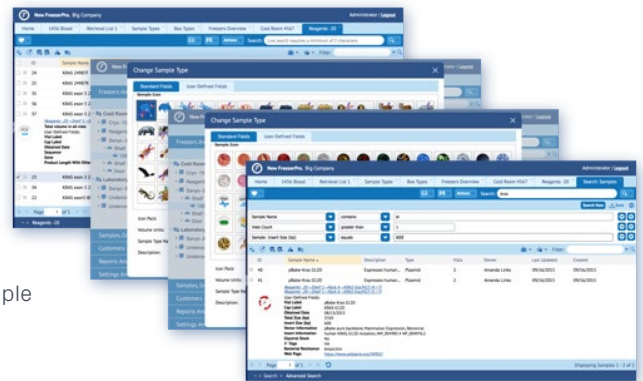
- Complete sample management
- Track samples in and out of freezers
- Reporting and data export/import (multiple formats)
- Live and smart search
- Full audit trails



 Integration Friendly

Using cross-region servers and industry-defining storage technologies, the system is designed to keep samples in the right conditions and make retrieving them for study easier. We manage security through sample data encryption, both during sample transit and while they are at rest. FreezerPro is designed and developed as a web-based sample management system that provides access to sample information from anywhere in the world.

- **No IT Requirements Whatsoever** - By not requiring installation, individual labs within larger organizations gain more autonomy. Start-ups and other small labs can completely avoid all IT staffing and investment
- **Regulatory Liability Protection** - Remove nearly all liability concerns related to data security. Using FreezePro Cloud negates expensive information security upgrades for individual labs
- **Lower Capital Expenditure** - With FreezerPro Cloud, the total cost of deployment is significantly lower, compared to other sample management software options. FreezerPro is a class-leading frozen sample management solution that is indispensable to any modern scientific or pharmaceutical laboratory
- **Deployed in Hours, Not Weeks** - FreezerPro systems automate more daily sample management operations than expensive software solutions
- **Makes Daily Lab Operations Easier** - FreezerPro Cloud records information for sample check in and out, aliquotting and inheritance, plus storage location data with only a few clicks or a drag of the mouse
- **Enhances Accuracy and Availability of Lab Information** - Advanced data mining, automatic data validity checks, hundreds of alert settings and embedded integration with Microsoft Excel are just a few of the tools users and admins have to ensure that data is input properly and is immediately accessible for analysis and reporting



Full Name _____

Job Position _____

Phone Number _____

Email _____



azenta.com